

**The beginning of implant therapy  
Beginning implant care with the end in mind.**

**The Diagnostic Wax Up and  
Planning Phase of Implant Therapy**

**Drs. Alan Rosenfeld and George Mandelaris**  
Diplomates, American Board of Periodontology

# Beginning with the end in mind



**This patient presented with missing teeth in the upper right and lower sections of his mouth as a result of an accident. His main interest was to replace these teeth with a fixed replacement strategy by dental implants.**

**The journey begins with developing a collaborative plan between the patients dentist, Drs. Rosenfeld & Mandelaris (surgeons), and the laboratory technician. After the consultation process, the dentist then transfer that prosthetic plan to study models and performs a diagnostic wax up.**

# Beginning with the end in mind

**Initial Examination of the Maxilla**



**Initial Examination of the Mandible**



**Missing teeth includes #'s 2, 3, 4, 5 & 6**

**Missing teeth includes #'s 18, 19, 20, 21**

## **The First Step In The Implant Process**

The first step involves making a stone model of the jaws and articulating them so that the team can study how the teeth and the jaws fit together. This is accomplished by taking impressions of the teeth and mounting the models on an articulator to simulate what the anatomic situation that the patient currently has.

# Beginning with the end in mind



After the impressions are made into stone casts (i.e. study models) and mounted on an articulator to simulate what the anatomic situation that the patient currently has, a diagnostic wax up is performed. This process simulates the position of where teeth should ideally be given the missing space where natural teeth used to be. This is called setting the optimal, final tooth position that the dentist and patient desire for a final outcome.

A scanning appliance is then made from this wax up so that the simulated proposed tooth position can be used when the patient has a CT scan of the jawbone.

# Beginning with the end in mind



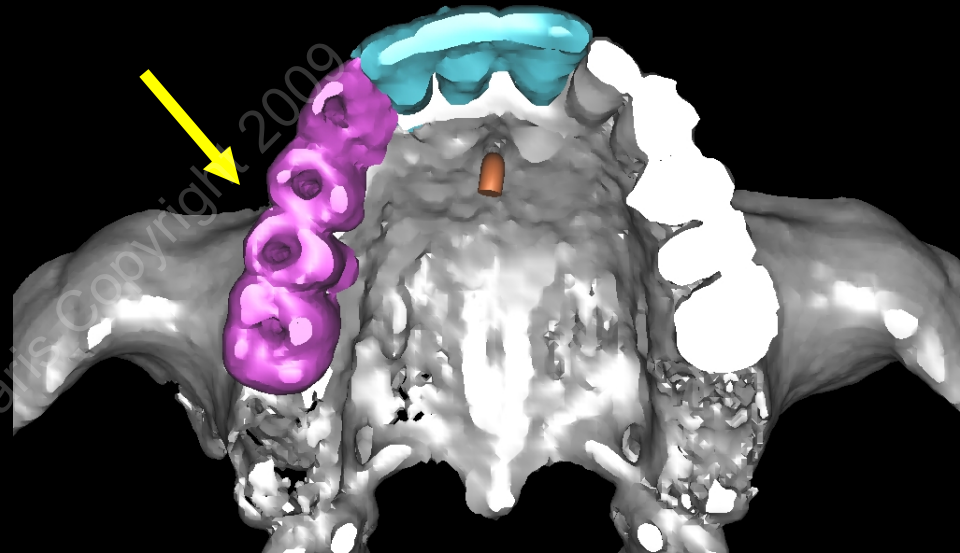
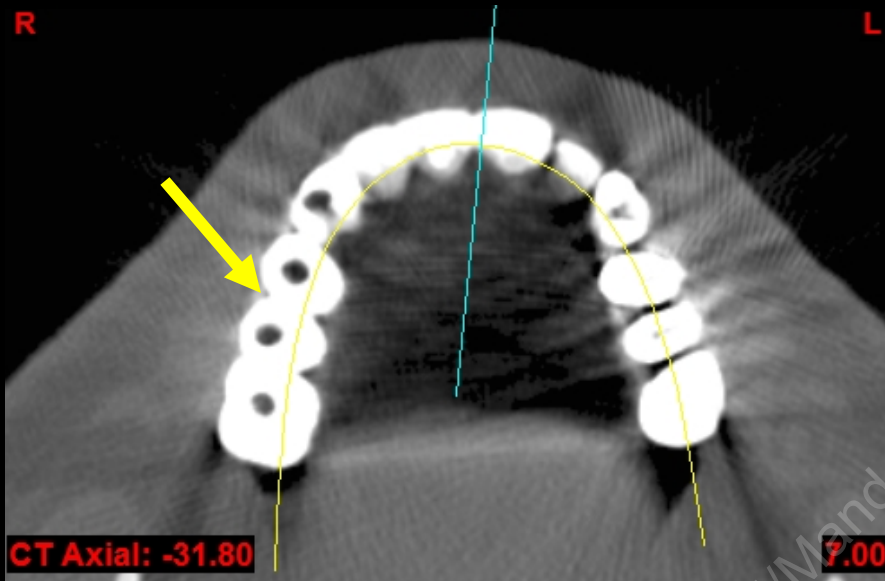
I  
N  
I  
T  
I  
A  
L



W  
A  
X  
U  
P

# Beginning with the end in mind

## The Diagnostic Phase of Implant Care CT Scan Assessment and 3D planning



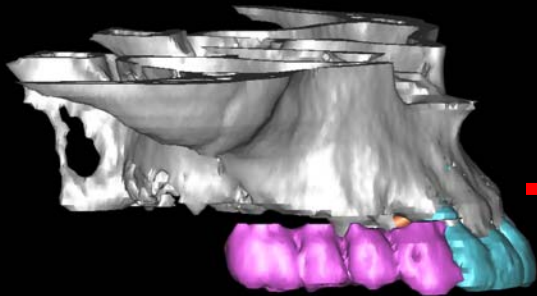
- The picture above represents an “axial” view of this patient's maxillary arch where he is hoping to have dental implants placed to replace his missing teeth.
- The teeth that have been waxed up from the previous page, have been transferred onto a “scanning appliance” which he wears during the CT scan imaging process.
- Here you can visualize the ideal prosthetic positions for teeth #'s 3, 4, 5, and 6 (yellow arrow). A negative image center has been placed in the center of each tooth to identify the center.

- The picture above the 3D reconstruction of the patient's maxillary arch. The scanning appliance has been colored purple (yellow arrow) to separate it from the patient's natural teeth (blue and grey).
- The 3D reconstruction is an interactive image which allows Drs. Rosenfeld and Mandelaris to study the patient's anatomy in all three dimensions prior to surgery. A Implant surgery plan is constructed from the CT scan & associated interactive software.

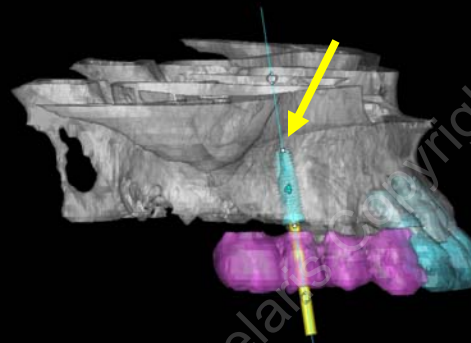
# The Presurgical Assessment

This is but a fraction of the surgical assessment that occurs for our patients before the surgery occurs with Drs. Rosenfeld & Mandelaris

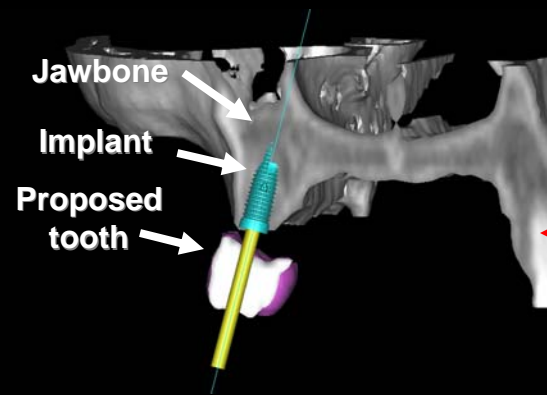
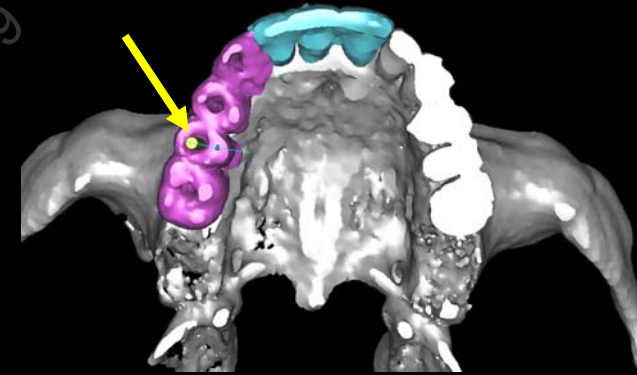
3D simulation of maxilla with CT scanning appliance in place



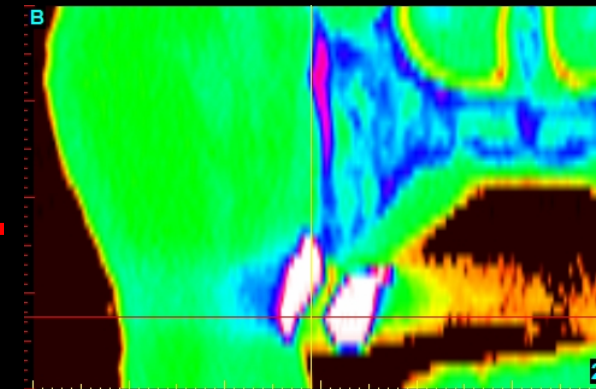
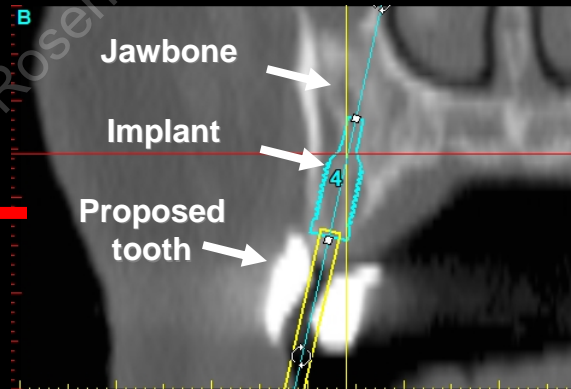
3D simulation of maxilla with implant placed in the #4 position (yellow arrows)



Occlusal evaluation of implant position



Analysis of implant position and bone width at proposed site #4.



Analysis of bone quality at proposed site

Rosenfeld/Mandelaris Copyright 2009

# The Next Step

- A consultation with the patient and the patients dentist to now discuss the treatment plan, the CT scan (if one has been ordered and taken), the available options the patient has, the risks/benefits of treatment, and the consequences of non-treatment.

## OUR GOAL

- The goal of the consultation process with Drs. Rosenfeld & Mandelaris **IS NOT** to have you say “YES” to have surgery in our office. It is for the patient to be educated about their oral health problems requiring our specialized care at a level far better than they have ever experienced before. Based on our in-depth work up and the education process that unfolds, the patient can then make an informed health care decision about the treatment options available for their specific problem.