

## **2 Mandibular Anterior Implants To Support A Removable Denture**

**The Contemporary Standard of Care For  
Removable Appliances in Edentulous Jaws**

**Drs. Alan Rosenfeld and George Mandelaris**  
Diplomates, American Board of Periodontology

# The Contemporary Standard of Care For Removable Appliances in Edentulous Jaws



**Initial X-rays: Infected remaining teeth with advanced bone loss and non restorable decay**

**Prognosis = Hopeless**

**Treatment = extraction + implant replacement**



**Initial clinical photo**

**Maxillary (upper) denture is present, but some lower teeth remain which are not salvageable**

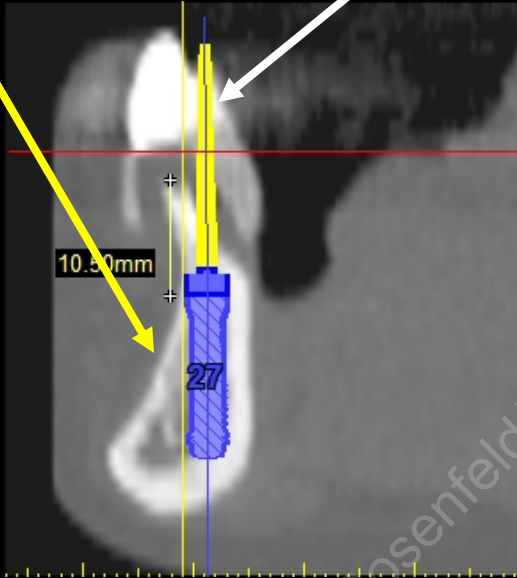
# The Contemporary Standard of Care For Removable Appliances in Edentulous Jaws

Patient's native bone

Tooth position planned

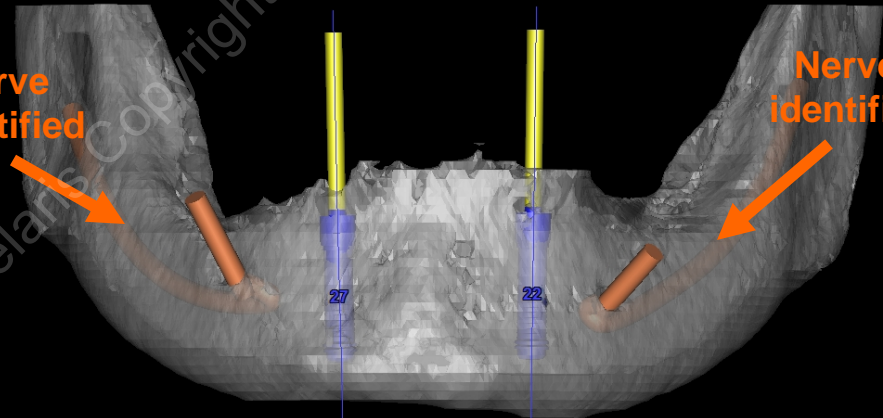
Virtual (3D) CT scan implant planning

B



Nerve identified

Nerve identified



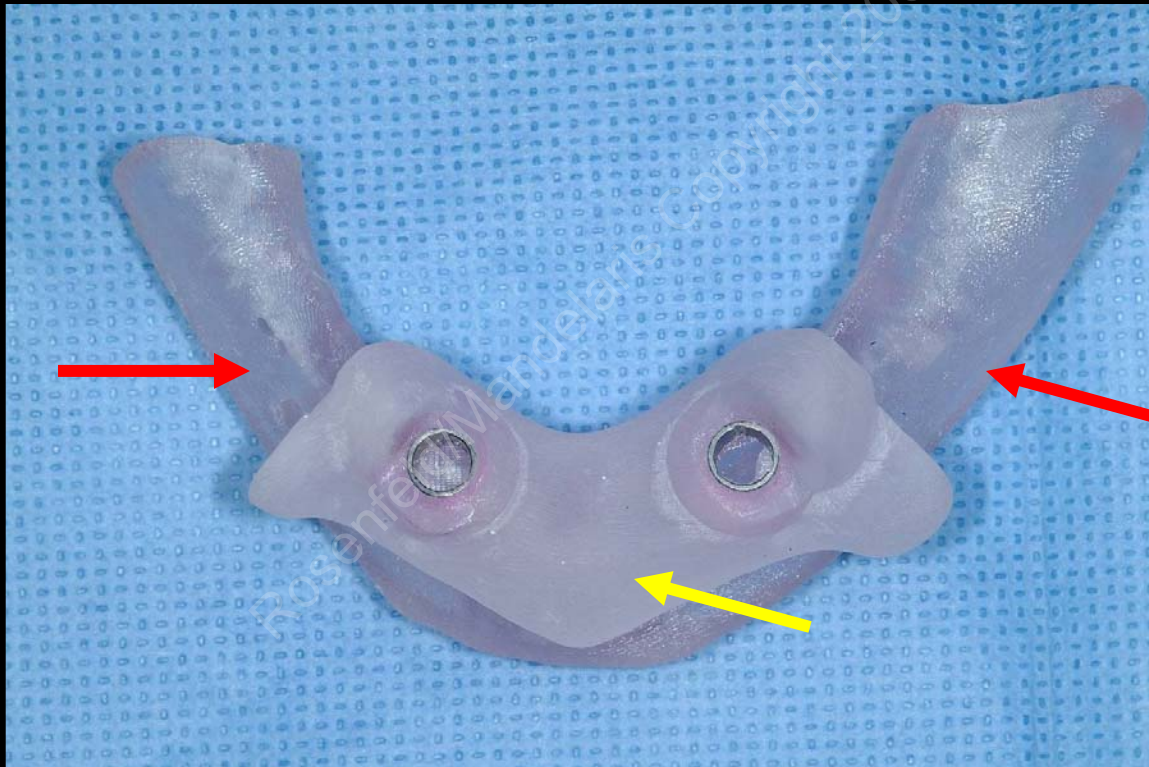
- Three dimensional reconstruction demonstrating planned implant positioning for this patient. Implant placement will occur simultaneous with the extraction of the remaining hopeless teeth.
- Two implants will be used to support a lower denture thereby securing in place during eating, talking and smiling activities. The implants will also help to maintain the remaining bone for this patient LONG-TERM.
- Position of nerves are highlighted in orange for safety in planning surgery.

- Cross section view of one of the implant positions. Note the adequate bone width to accommodate the planned dental implant at this position. Implant will be placed in the bone beyond the apex of the tooth requiring some of the unnecessary bone to be removed.

# The Contemporary Standard of Care For Removable Appliances in Edentulous Jaws

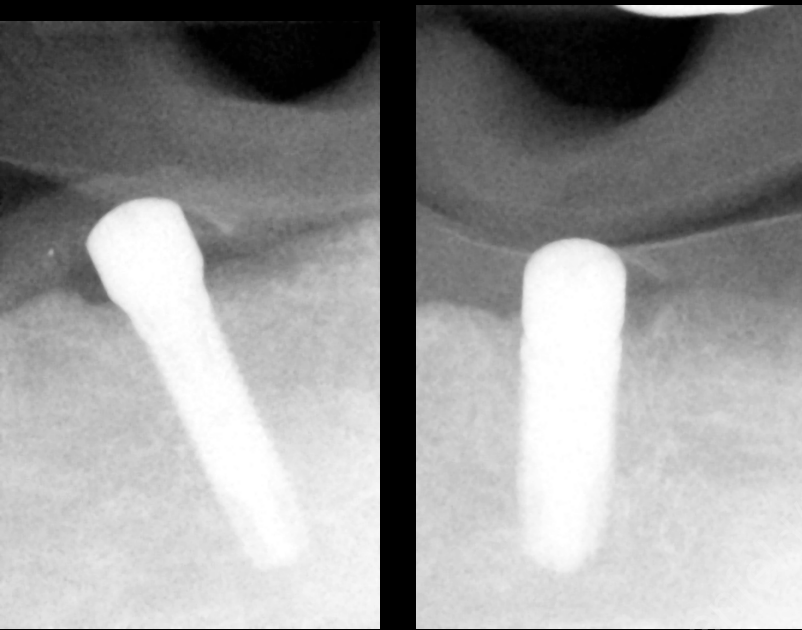
## CT Scan plan and 3D implant planning

CT guided surgery will be utilized to ensure precise implant placement



CT scan technology utilized to create virtual duplicate of the patients jawbone (**red arrows**) and a surgical guide developed (**yellow arrow**) from patients CT scan plan to ensure precise, accurate and safety in implant placement.

# The Contemporary Standard of Care For Removable Appliances in Edentulous Jaws



**X-rays showing implants placed into lower jawbone**



**Final outcome of the two implants**

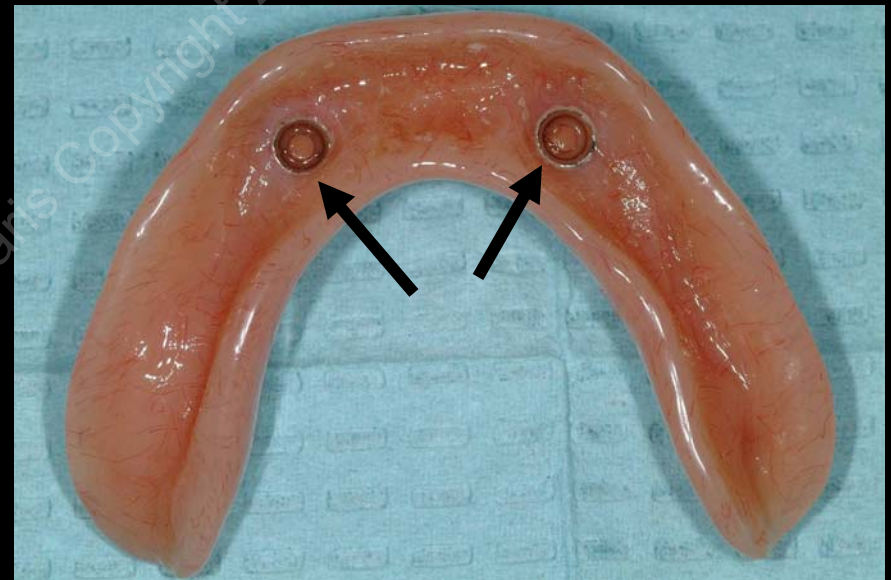
**Attachments (gold pieces shown here are called “locator” abutments) which connect to lower denture enabling its security and stability for the patient**

# The Contemporary Standard of Care For Removable Appliances in Edentulous Jaws

New Maxillary Complete Denture & Mandibular Implant Supported Removable Denture



Mandibular denture is removable for the patient, but highly retentive due to the implants



Mandibular implant retained removable denture prosthesis with Attachments embedded within denture that the implants fit into (arrows)