

SFOT

Anterior open bite...

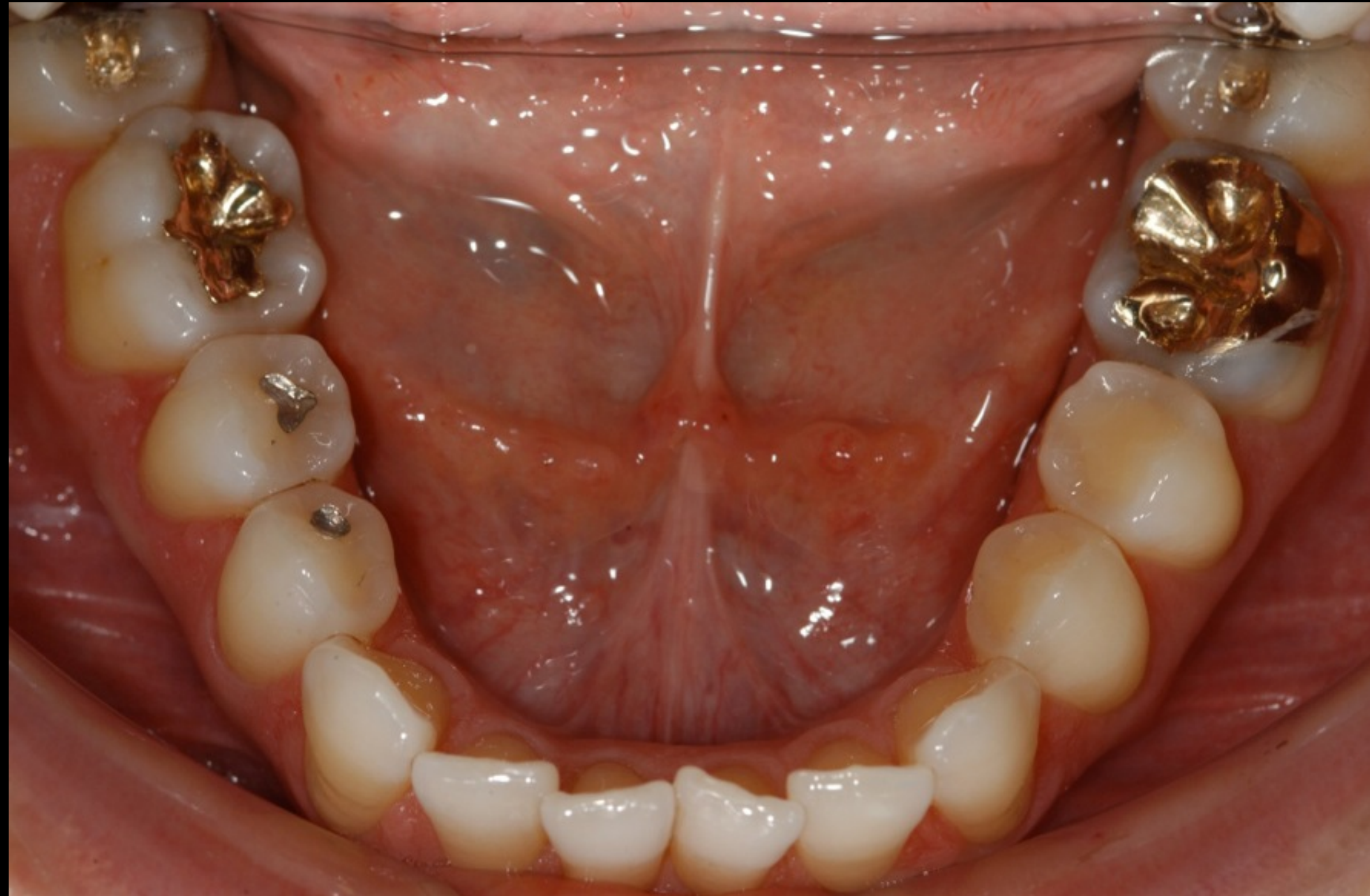
*Class I malocclusion
Gingival recession #6 and #11*

Initial Exam



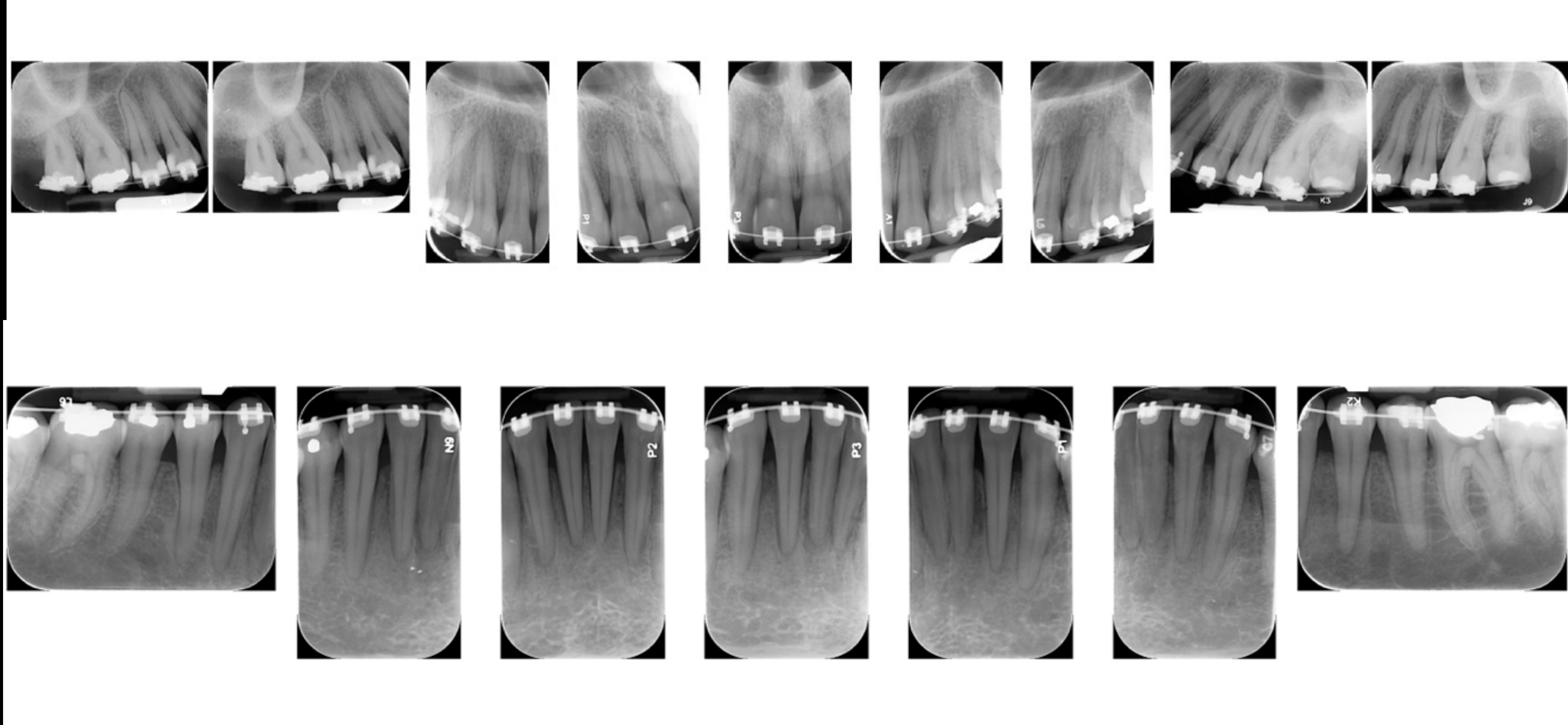
Frontal & Buccal views

Initial Exam



Occlusal views

Radiographs



Periapicals taken pre surgery

Periodontitis resistance

Diagnosis

Localized recession based attachment loss

Mucogingival abnormalities/lack of attached gingiva #6, 11, 22, 27

Malocclusion: anterior open bite, posterior cross bite

Prognosis

Good: all teeth

Treatment Plan

Problem

**Anterior open bite
Posterior cross bite**

Gingival Recession #6 & 11

Thin/Thin Dentoalveolar bone Phenotype

Management

S F O T

+

Root coverage

Skeletal based problems

Dentoalveolar compensations

Imaging



CBC T Evaluation

assessment

3D CranioMandibular

Imaging

Anterior tooth relationship



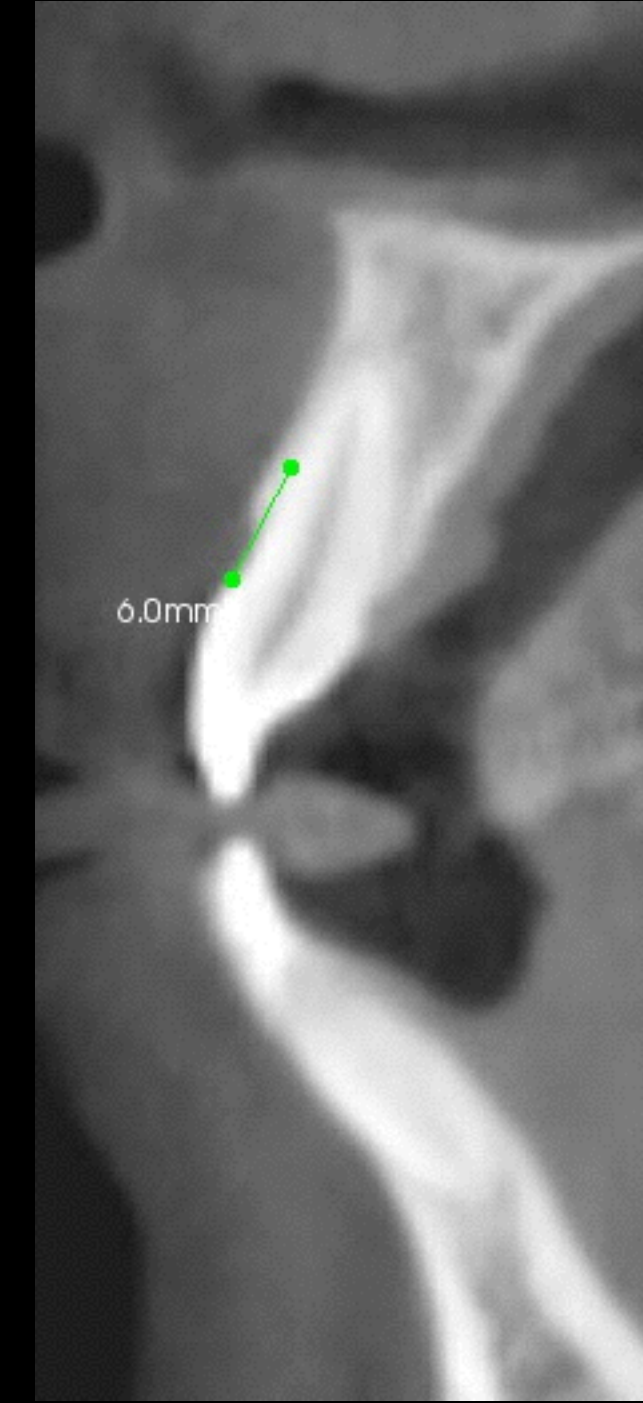
Sagittal



Maxillary. Axial
MP2



#6



#9 at MP2



#24 MP1

*Dentoalveolar bone phenotype
Risk*

Healing assessment

2 week post op

Maxilla



3 months post op

Maxilla



Pre Op SFOOT- Mandible
4.5 months post op Maxilla

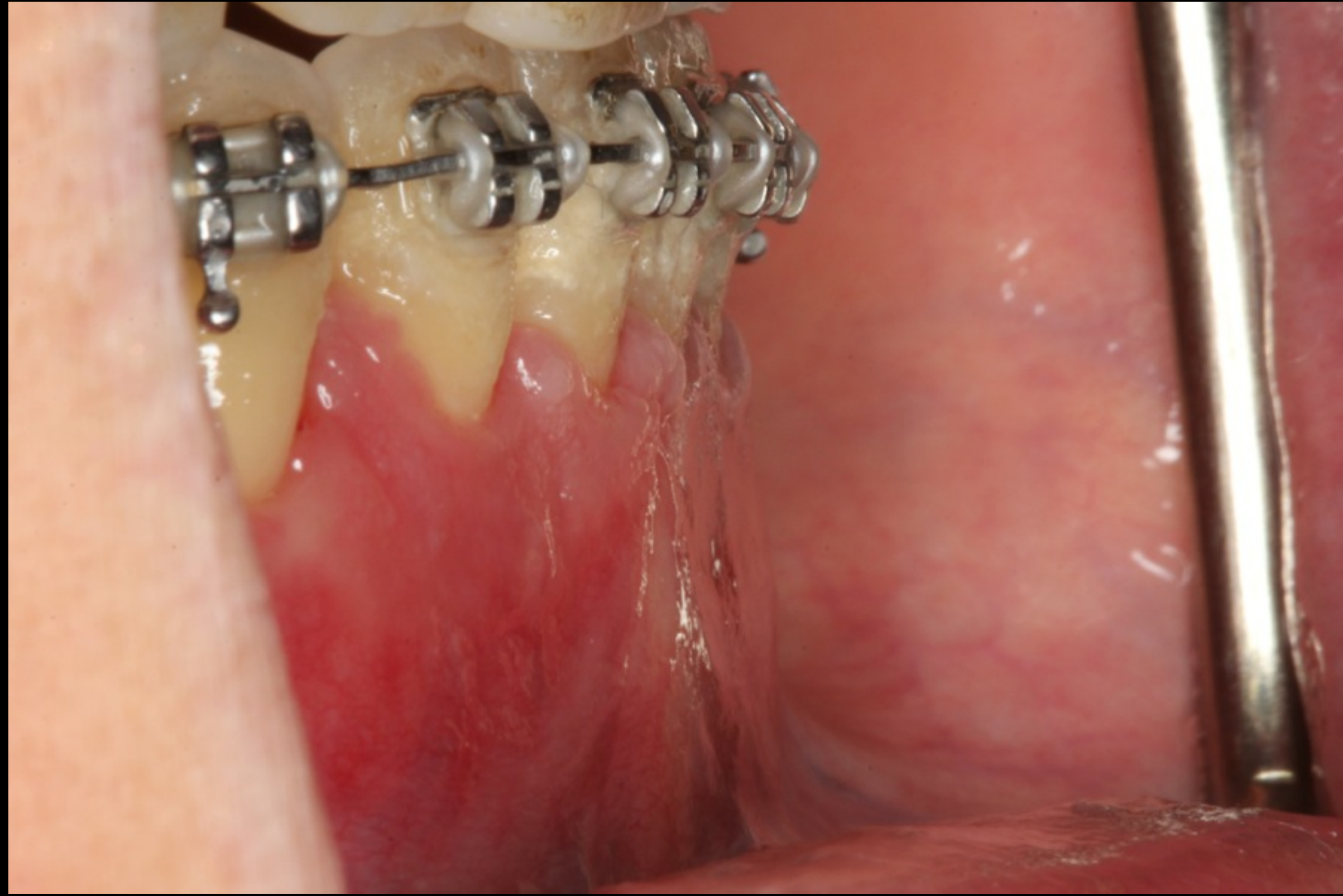


Surgery



4.5 months post SFOOT- max
SFOOT - mandible

4 week post op- mandible



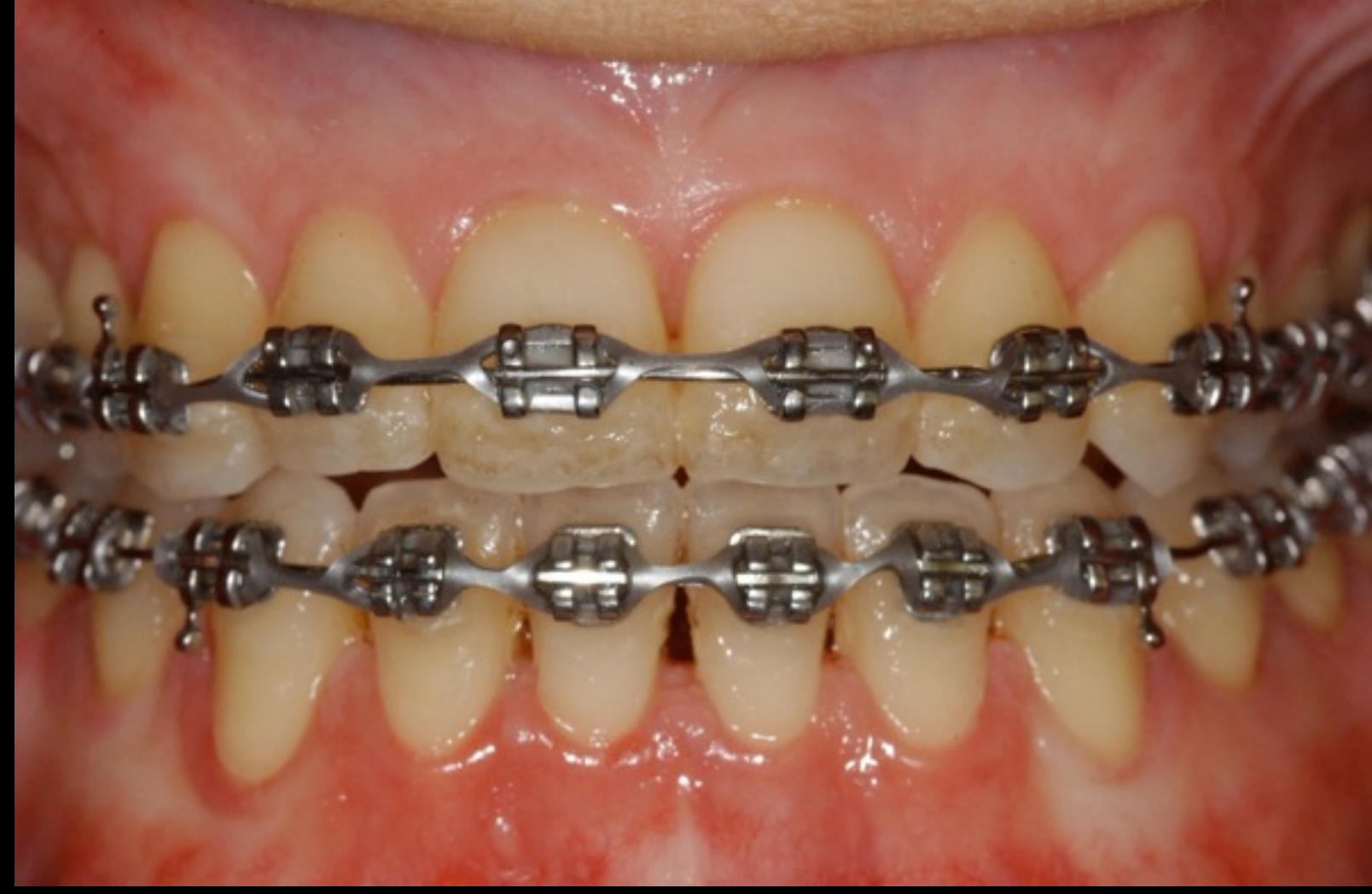
Volume change

8 weeks post op - mandible



6 months post op - maxilla
2 months post op - mandible

8 months post op- maxilla
3.5 months post op-mandible



8 months post op- maxilla
3.5 months post op - mandible

16 months post op - maxilla
12 months post op - mandible



12 months post op - mandible
16 months post op - maxilla

Pre vs. Post op - 12 months

Phenotype conversion

Complete root coverage



Posterior cross bite corrected

Anterior open bite corrected

Malocclusion corrected